

Environmental Justice Evaluations of Infrastructure Projects



1. Introduction

AECOM is excited and honored to partner with our clients on Environmental Justice (EJ). AECOM foresees this opportunity with you to serve as the foundation for a symbiotic partnership to strengthen resilience and equity in the delivery of your services.

This represents an entirely novel approach, based on the most current peer-reviewed research and agreed-upon knowledge, for evaluating the impacts of operations on the surrounding communities and generating inferences that will be cross-cutting for the benefit of our client's infrastructure projects. Due to the level of sophistication and complexity of our client's projects, as well as the long-term impacts of EJ initiatives and requirements on business outcomes, AECOM's support and expertise on this topic will provide additional benefits.

Through this approach, our clients will gain more innovative, holistic, and transformational solutions to addressing EJ issues for your infrastructure projects. Key benefits the AECOM team will bring include:

Professional expertise:

the ability to apply our technical, research, commercial, and project management skills within the partnership.

Innovation and Data Analytics:

the technical and process innovation skills to solve some of the most complex and new challenges in EJ screening and equity mapping leveraging available data sets and state-of-the-art computational tools.

Deep EJ Knowledge:

access to technical knowledge base that will provide transformative value, built over years of comprehensive EJ work, including socioeconomic statistics, tribal treaties and regulations, and citizen consciousness.

Stakeholder mapping:

identification of organizations and individuals (both Indigenous and EJ) who are important stakeholders or who may play some role in addressing EJ concerns in the community.



AECOM aims to align the delivery of EJ evaluations with the vision of helping our clients deliver some of the most transformational infrastructure projects throughout the United States and globally. As our clients continue to push change forward when it comes to sustainability, AECOM is ready to move in lockstep with you to partner in assessing and deciding ways to accelerate meaningful changes.

Our clients are moving forward with EJ evaluations is aptly timed to coincide with governmental involvement and legislation. In 2021, the Federal government has begun taking tangible steps to advance EJ. The U.S. Environmental Protection Agency (EPA) and the Department of Justice (DOJ) have announced strategies to strengthen environmental enforcement, environmental agencies have begun to incorporate EJ concerns into project permitting and environmental reviews, and the White House has provided key guidance to help agencies direct funding to advance EJ. The environmental framework established by these initial actions is unprecedented in scope and potential impact.

To advance our clients' understanding of its impacts on social equity, AECOM proposes to conduct an EJ analysis/screening of your infrastructure project locations. Based on the analysis, AECOM will obtain an understanding of the surrounding communities from an EJ perspective and a baseline for identifying and quantifying the site-specific impacts of concern with the infrastructure project location.



Environmental Justice is

“...the fair treatment and meaningful involvement of all people regardless of race, color, national origin, or income with respect to the development, implementation and enforcement of environmental laws, regulations, and policies.” ~ US EPA

Awards and Recognition



Top Environmental and Corporate Sustainability Services Provider
2018 Verdantix Green Quadrant.
Environmental Services



#1 ENR Environmental Sciences
2021 Engineering News-Record



Top Environmental Consultancy
Environmental Analyst



#2 Green Building Design Firm in the US
2020 Engineering News-Record



Climate Change Adaptation and Resilience
2018-2020 Climate Change Journal Awards
– Seven Awards for Project Merit and Industry Leadership



Environmental Consulting
2018-2020 Environmental Business Journal Awards – Ten Awards for Industry Leadership, Technology Merit, Social Contribution and New Practice Area



2. Partnership with the AECOM Team

About AECOM

With almost 49,000 employees, AECOM is a world leader in developing environmental solutions. We have been a key participant in the technical consortia and partner with dozens of universities to research top issues. We help clients around the world balance growth with resiliency—achieving compliance and reducing risks while protecting our natural environment. Our unique global Technical Practice Network readily shares best practices on internal networks, and have cataloged over 200 internal digital innovations/executables.

AECOM Qualifications

Delivering complex infrastructure projects requires detailed planning, precision execution, and careful coordination with stakeholders and customers. Working across all stakeholder levels means solutions everyone can support. The EJ process requires that no minority or low-income population group should bear a disproportionate share of potential adverse environmental and socioeconomic impacts resulting from major projects. Successful EJ analysis requires input from a broad range of subject matter experts.

Our experienced staff commands exemplary knowledge of EJ issues. AECOM will:

1. Evaluate potential EJ issues and concerns,
2. Identify technically sound and cost-effective approaches to address identified EJ issues,
3. Ensure collaborative and effective community involvement, and
4. Provide expert consultation services to assess existing impacts, as needed.

AECOM has on-staff planners, economists, and strategic communications specialists with the skills and expertise needed to satisfy requirements to conduct EJ analyses for a variety of infrastructure and industrial projects. Our staff are accustomed to performing multi-tier assessments of the EJ populations and impacts. The programmatic EJ analysis and findings are typically summarized in a technical report that will:

- Identify federal, state, and local EJ policies, regulatory requirements, and compliance guidelines applicable to the project;
- Identify and characterize the highly burdened disadvantaged communities that qualify as EJ communities;
- Assess the potential for project-related adverse health effects and environmental impacts, considering the type, likelihood, and magnitude of significant adverse impacts identified and their relationship with the identified EJ communities of concern; and
- Evaluate whether any significant adverse impacts would be expected to be distributed disproportionately between any of the identified EJ communities.

AECOM is supporting the LA River Gateway Project which will serve as a catalyst for delivering river revitalization and community benefits while enhancing quality of life for all of the area residents and visitors.



OPEN SPACE

- 3% of land is currently dedicated to parks and open space
- 11% of land will be dedicated to parks and open space in this proposal
- 100% of local residents will be within a 10-minute walk to parks

AFFORDABLE & SUSTAINABLE LIVING

- With full implementation 36,000 NEW HOUSING UNITS
- including 7,800 AFFORDABLE HOUSING UNITS
- 600 ACRES OF PUBLIC LAND to consider for joint development

MOBILITY & TRANSPORTATION

- 105 miles of local rail service with more coming
- 91% of local residents will have a 10-minute walk to rail transportation upon completion

EMPLOYMENT & BUSINESS

- With full implementation 70 JOBS PER ACRE IN STUDY AREA
- 97% OF JOBS will be within a 10-minute walk of a rail station

FUNDING & PARTNERING

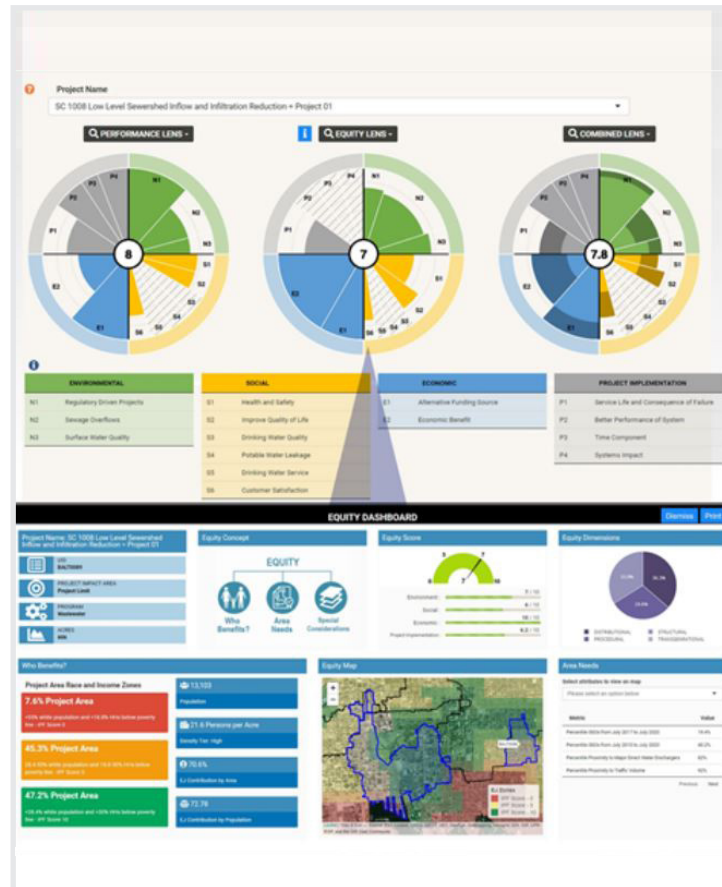
- \$580M approved for LA River Revitalization projects since 2016
- \$20B invested in transportation infrastructure to create transit-oriented communities and job centers

3. AECOM EJ Project Examples



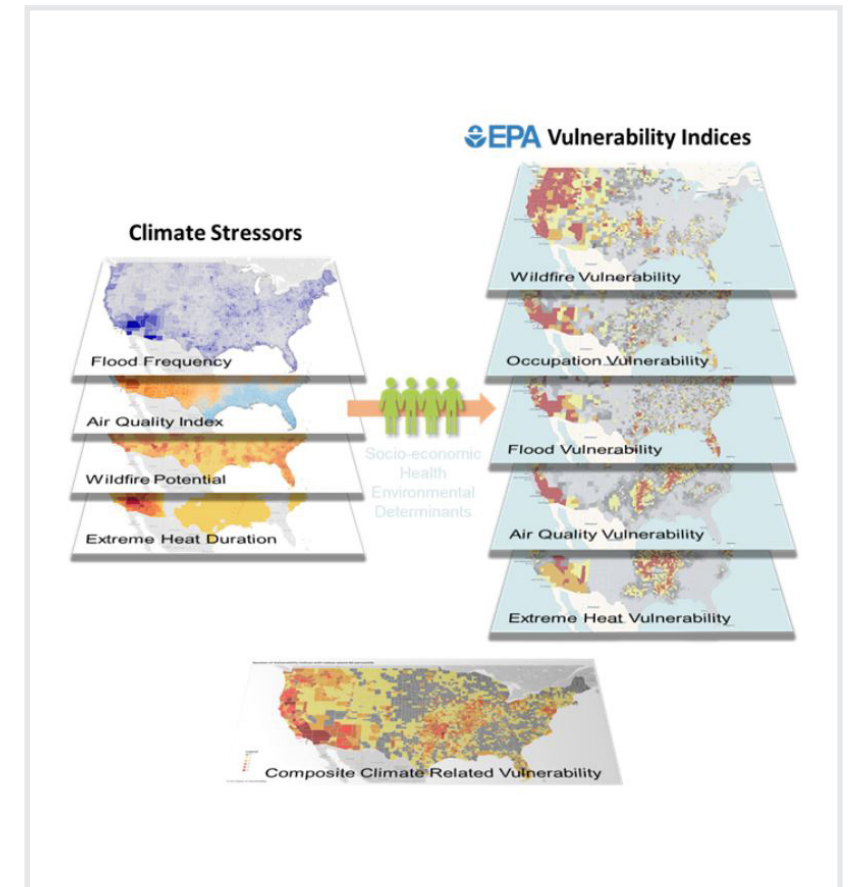
City of Baltimore

In Baltimore, AECOM is working with the Department of Public Works to prioritize capital investment for infrastructure projects to effectively decide which projects should move forward. Equity is the priority. By using this on-line tool developed by AECOM, the Department of Public Works can view projects through an 'Equity Lens' that aggregates data such as percentage of disadvantaged and/or minority populations within the project area and enables the city to evaluate multiple locations. Each potential infrastructure project receives a scorecard for project performance, equity and combined performance and equity to help the city make the most equitable infrastructure investment choices.



Development of EPA Social Vulnerability Index

Working for the EPA, AECOM has developed a nationwide dataset of social vulnerability indicators and historical trend analysis for climate change related stressors including extreme heat, wildfire and smoke risks, air quality, coastal and riverine inundation, and occupational risks. The vulnerability index evaluation included a comprehensive analysis of sensitive population groups categorized with socio-economic, health, and other determinants such as urban environments and occupations.





City of Houston

The REAL (Regional Express Access Lanes) plan aims to connect the greater Houston region through an interconnected system of managed express lanes and mobility hubs serving as the blueprint for building a future region-wide transportation system. Increasing mobility of the traditionally underserved and socioeconomically vulnerable communities is one of the goals of the plan. The proposed system will improve transit and multi-modal access to these communities and improve the level of service for overall mobility for the underserved. To ensure the equitable planning of the new system, the plan ensures the EJ areas receive no less benefits than more affluent communities by looking at the range of metrics characterizing the socioeconomic and mobility contexts existing within the region. In that analysis, the areas that are more vulnerable exhibit higher proportions of the following demographic categories (source: H-GAC, <https://www.h-gac.com/>):

- Poverty
- Non-Hispanic, non-white
- Hispanic
- Limited English proficiency
- Disabled family
- Elderly
- Car-less
- Single female householder with child/children in the household
- Low- and moderate-income individuals

In the areas where mobility hubs are not located, and are deemed socioeconomically disadvantaged and lacking mobility options, recommendations will be developed to bring more mobility opportunities and keep local residents connected through the transportation system in order to have access to the opportunities through the more-efficient transportation system.



Dominion Energy

AECOM is providing EJ evaluations for four large projects across the state of Virginia for Dominion Energy. Tasks include demographic data analysis, stakeholder identification, impact analysis, disproportionality assessments, mapping for SCC files, and development of mitigation recommendations. We are providing EJ consulting services in connection with the permitting, including assisting in developing strategy, review of public outreach documents, public engagement consultation and support, as well as other support for or matters related to the permitting.





San Francisco - Sewer System Improvement Project

AECOM is developing a triple bottom line (TBL) evaluation tool to compare major capital projects being proposed under the San Francisco Public Utilities Commission's (SFPUC) Sewer System Improvement Program (SSIP). The TBL model evaluates future sewer alternatives based on financial, social and environmental benefits to SFPUC, other city agencies and San Francisco. The interactive model will be integrated into SFPUC's project development system, and will be a necessary step for project engineers during the planning stages of proposed alternatives.

The TBL analysis includes a full life-cycle cost analysis considering capital, O&M, repair and renewal costs, and others. Social and environmental criteria or impacts were developed in collaboration with SFPUC and other San Francisco agencies in order to increase the potential for synergistic impacts. Social and environmental criteria are individually ranked to allow for clear comparison across alternative projects.

In addition to coordination across various San Francisco public agencies, the TBL development effort includes extensive public outreach via workshops and community surveys. These efforts help to gauge public reaction to various social impacts and allow decision makers to use the TBL model to understand community sentiments.

Projects being considered under the SSIP include both grey and green infrastructure projects within the collection, conveyance and treatment systems.

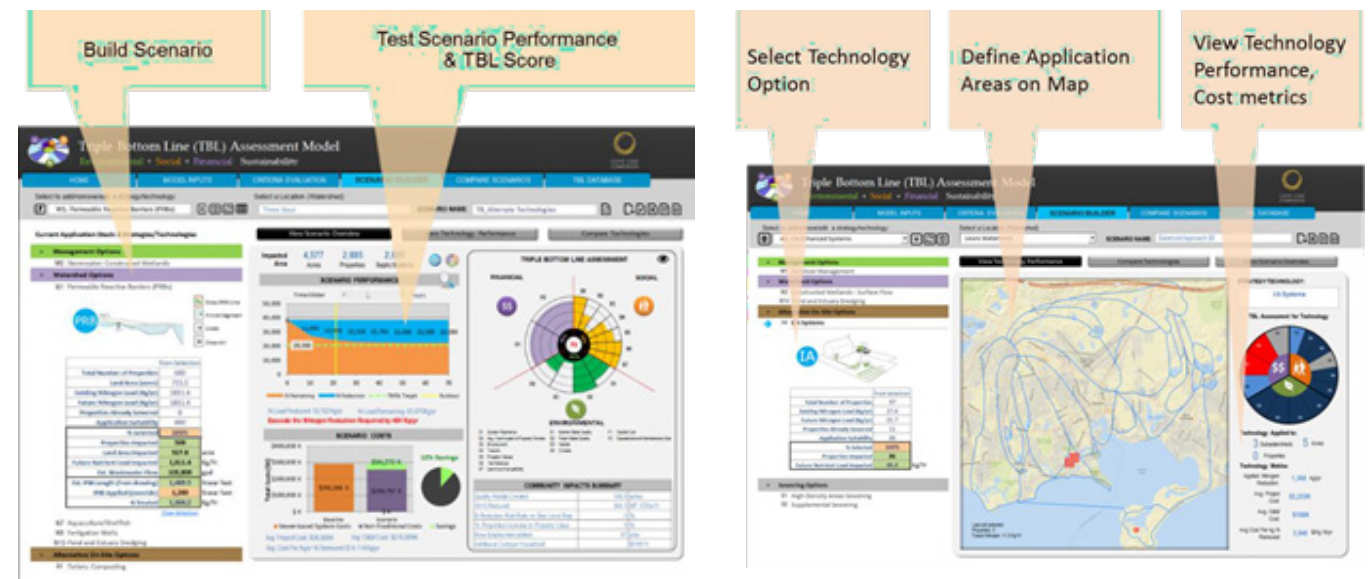
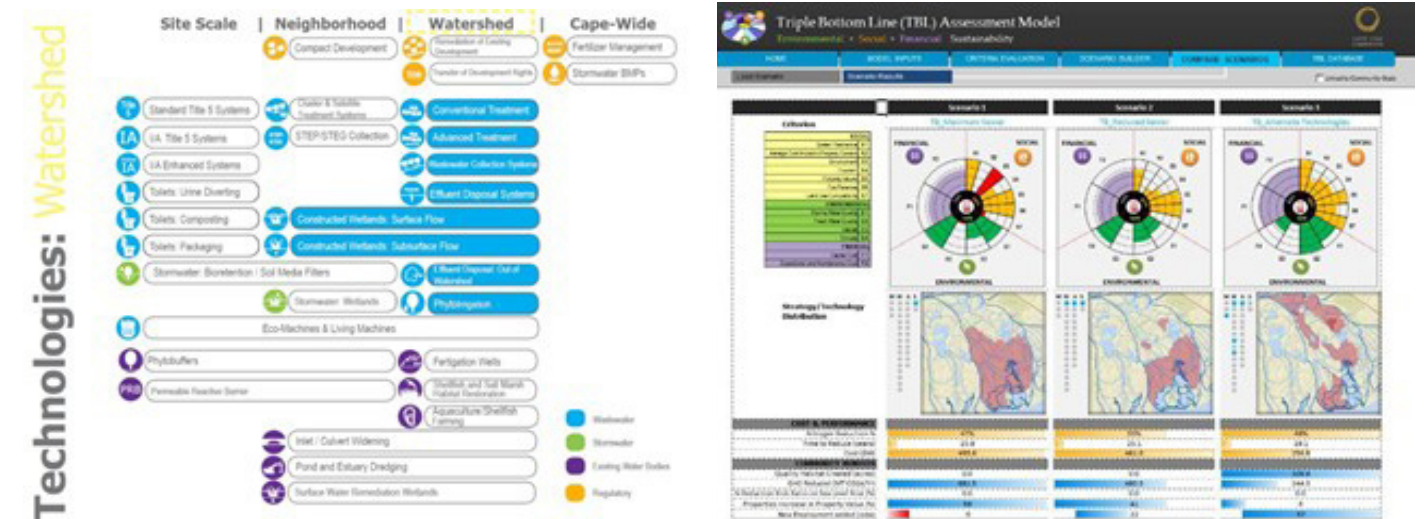




Triple Bottom Line Assessment for Cape Cod Water Quality Management (208 Plan)

As part of an update to the 208 Plan, the Cape Cod Commission tasked AECOM to develop and test a comprehensive toolkit of technology solutions to mitigate the pressing Nitrogen pollution problem facing the Cape.

In addition to developing the Technology Toolkit with solutions ranging from fertilizer management to permeable reactive barriers to aquaculture, AECOM developed a Triple Bottom Line assessment model that evaluates the social, environmental, and financial consequences of water quality improvement scenarios in Cape Cod versus the costs of doing nothing. The model is applied to each watershed as part of their community planning process to weight the triple bottom line consequences of different water quality solutions (e.g. composting toilets versus sewer hook-up). This includes evaluating impacts to tourism, property values, ratepayer costs, climate, employment, ecology, and municipal finance.





City of Charleston, South Carolina - Prioritization Tool

The City of Charleston's Stormwater Management Program has initiated Watershed Master Planning as a holistic approach to evaluate existing conditions and identify and prioritize proposed solutions to stormwater problems throughout the city. This project illustrates a methodology adopted by the Department of Stormwater that uses a systematic approach to prioritize different types of projects in order to develop an integrated and community-value driven Capital Improvement Projects (CIP) list.

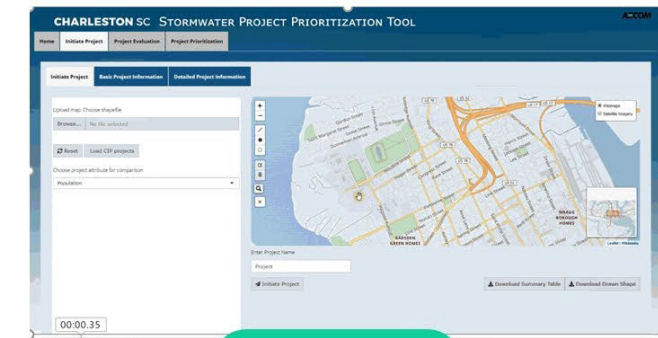
While current master plan efforts do include some level of prioritization, the criteria used is often not consistent across multiple studies, not clearly defined, and often not comprehensive to fully capture all priorities of the community. With several watershed and drainage-basin plans completed and on-going, the Department of Stormwater at the City is developing a systematic, consistent, and comprehensive way to rank and prioritize individual projects and also get a program level assessment.

The innovative prioritization methodology adopted by the Department of Stormwater uses multi-criteria data-driven analysis and a framework of social, environmental, economic, and operation performance criteria. This framework allows for a more robust evaluation to integrate other stakeholder perspectives that may include the broader water resource objectives, sustainable and resilient communities, and environmental protection. This framework will also help in identifying high-value multiple-benefit stormwater projects by analyzing performance along these inter-related dimensions and provide a holistic approach to measure sustainability in terms of stormwater management.



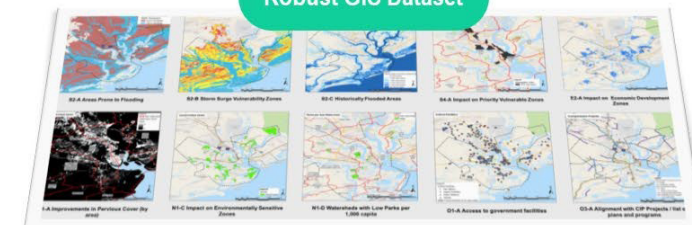
Common questions we need answered:

- What projects are best performing?
- What Projects bring the best value to the community?
- What projects are the most cost-effective?
- Which projects meet the Needs identified?
- Which are the best projects that fit our CIP budget?

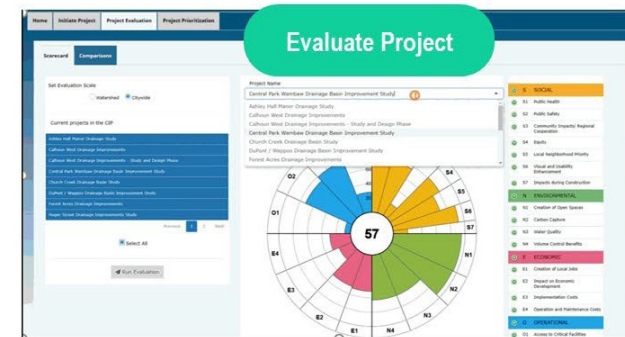


Define Project

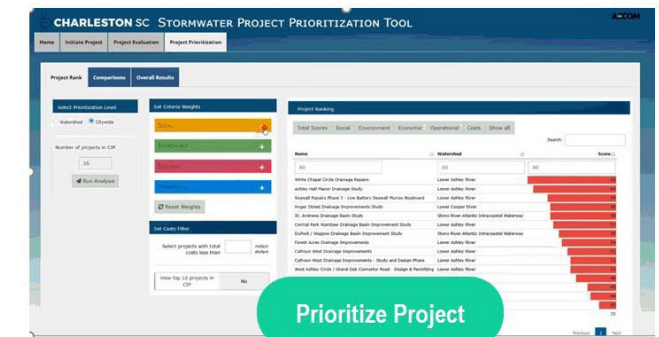
Robust GIS Dataset



Evaluate Project



Prioritize Project



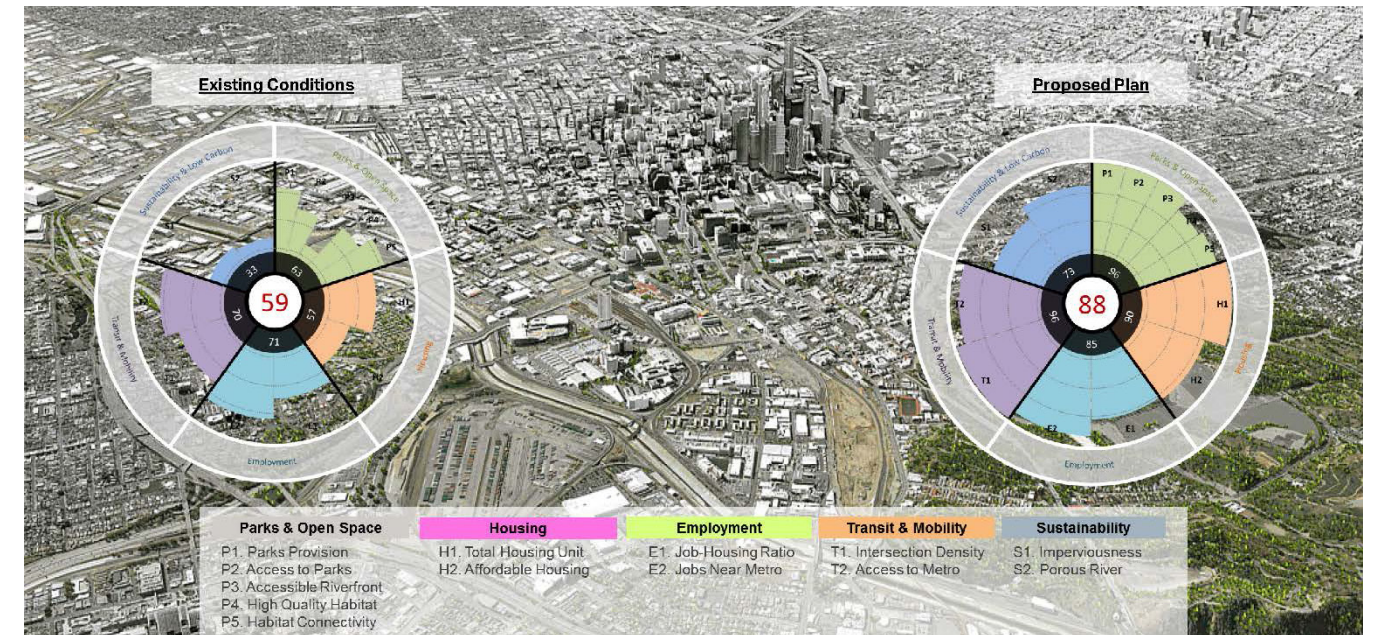
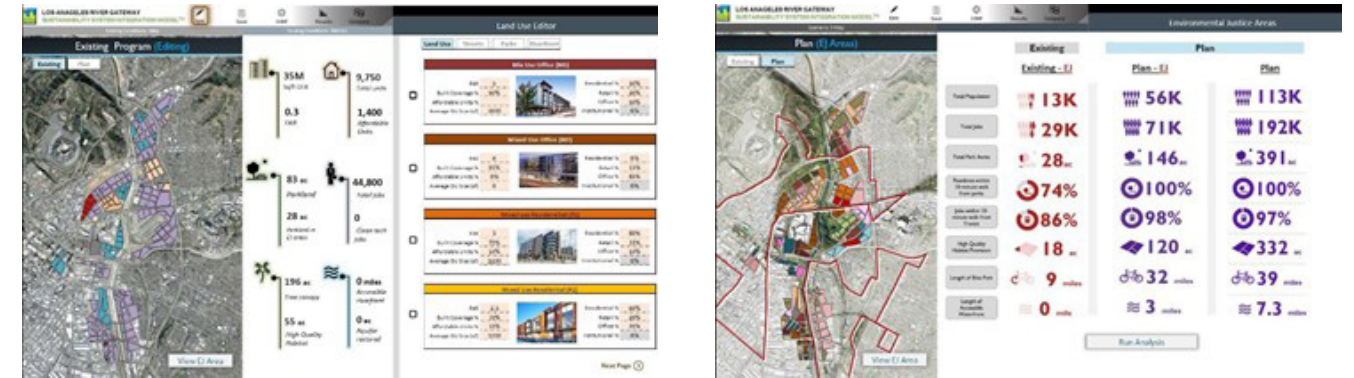


Los Angeles River Gateway Redevelopment Plan Performance Analysis

Working with the City of Los Angeles, AECOM has developed a visionary plan joining the city with the river and nature, linking neighborhoods separated by the river, and uniting open space, housing, transportation and commerce in ways that will transform Los Angeles for generations to come.

As part of the planning process, AECOM utilized their proprietary performance-based planning tools to analyze the before and after impacts of redevelopment and ensure that the planning strategies being proposed met the sustainability goals and objectives set by the city.

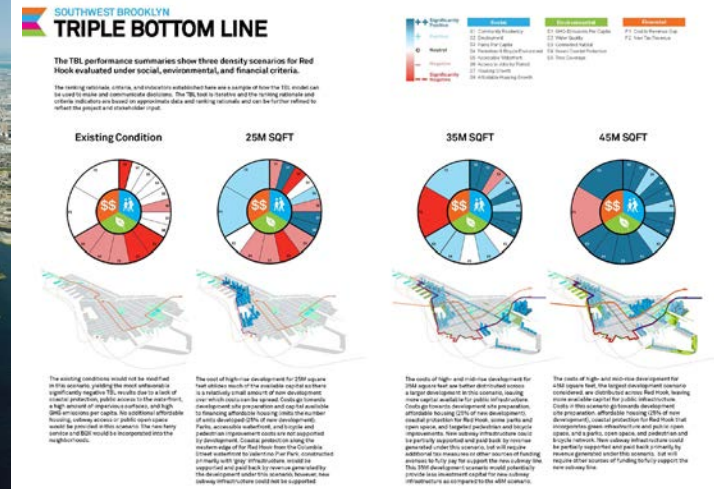
The performance-based master planning process included the use of new Placetypes – prototypical development typologies strategically placed in underdeveloped and derelict industrial uses to maximize walkability and access to transit and other amenities. GIS was extensively used to map the spatial implications of land use, population density and employment. The developed plan was balanced to ensure that environmental justice zones were equally benefiting from improvements, new jobs, and affordable housing being added. An overall performance scorecard was developed to compare improvements from existing conditions and iteratively improve and optimize the final plan.





Southwest Brooklyn - Growing the Waterfront Again

Southwest Brooklyn's industrial port history provided an economic engine but also cut off Brooklyn from the waterfront. The redevelopment of the waterfront is therefore an opportunity to re-connect Brooklyn to the water and to expand transit, increase job accessibility, decrease flooding, and promote sustainable development. To help evaluate proposals for redevelopment, AECOM developed a Triple Bottom Line framework and associated tool to allow for comprehensive evaluation that allowed for the incorporation of social, environmental, and financial considerations as well as the priorities of New York City's community-vetted vision documents. The framework was driven by four guiding principles as the lens through which to examine scenarios: Growth, Equity, Resiliency and Sustainability.



Project Goals:

- Increase Transit Options
- Make Jobs more Attainable
- Prevent Flooding
- Promote Sustainable Development

GROWTH

- Subway
- Street Grid Connections
- Box
- Pedestrian & Bike Improvements
- Housing Growth
- Industrial Jobs

EQUITY

- Affordable Housing
- Parks & Open Space
- Accessible Waterfront
- Concentrated Density
- Streetscape Improvements
- Access to Jobs

RESILIENCY

- Raised Ground
- Fortify Architecture
- Deployable
- Berm
- Flood Gate
- Box Flood Protection

SUSTAINABILITY

- Smart-Grid
- Massing Orientation
- Local Renewable Energy
- GHG Emissions Reduction
- Biodiversity
- Permeous Surface

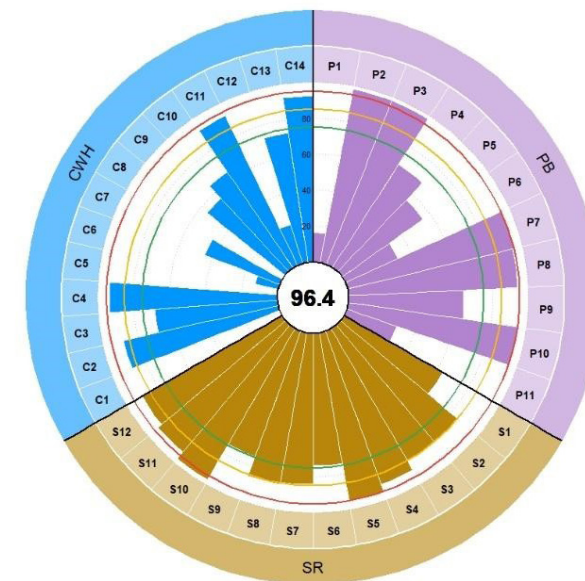
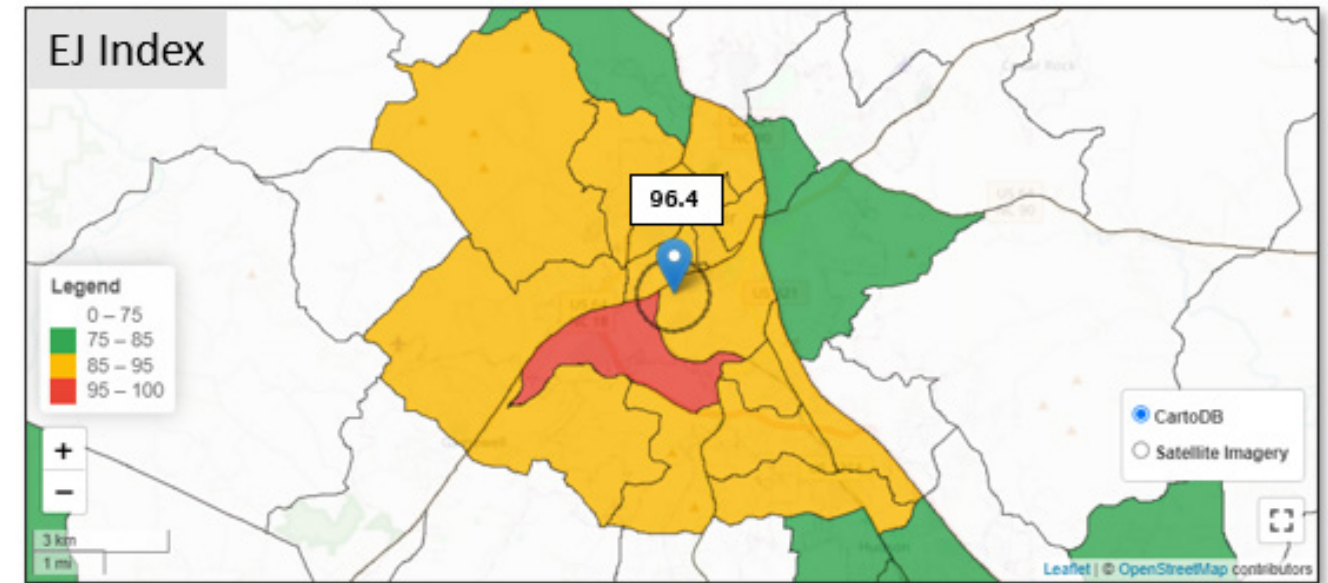


Confidential Client

AECOM worked with a confidential client to conduct EJ assessments for each of their data center locations across the U.S. This included a national and state level EJ score based on a standard scoring process. This standard scoring process aligns with the CalEnviroScreen methodology which stems from harmonized nationally available datasets from the USEPA Environmental Justice Screening and Mapping Tool (EJScreen), the US Centers for Disease Control and Prevention (CDC) Social Vulnerability Index (SVI) data, and the Federal Emergency Management Agency (FEMA) National Risk Index (NRI).

The indicators pulled from these resources were grouped under Climate & Weather Hazard (CWH), Pollution Burden (PB), and Socioeconomic Risk (SR) indexes. The indexes were combined to generate a percentile score for the normal distributions of scores at the national and state levels. In addition to the quantitative score, AECOM conducted external desktop research to provide more context to the scores and allow for the client to understand the nuance of EJ and community concerns in each of these locations.

As a part of the desktop reviews, we conducted research into historical and upcoming regulations or guidance in regard to EJ at both a federal and state level. We also looked into additional state and local data, as well as tribal and indigenous concerns where applicable. The culmination of these evaluations were synthesized in an EJ Report per data center location with recommendations to mitigate EJ risk, as well as a summary slide deck to be used at a higher level.



International EJ work

Total E&P México, S.A. de C.V.

AECOM prepared social impact assessment for the Contract Area 15, Southeast Basins in the Gulf of Mexico for the above-mentioned client. The contract area consisted of an area of 971,567 square kilometers (km²). The scope involved 1) identification of area of influence of the project, 2) identification and characterization of the communities and towns located in the area of Influence of the project, and 3) identification, characterization, prediction and evaluation of the positive and negative social impacts that could arise from the project.

Indigenous Outreach in Australia and New Zealand



In July 2014, AECOM launched its first Reconciliation Action Plan (RAP) marking the beginning of AECOM's commitment to Aboriginal and Torres Strait Islander Australians. A Reconciliation Action Plan is a strategic document designed to support an organization's business plan in delivering outcomes to Aboriginal and Torres Strait Islander Peoples. The document provides practical actions that drive AECOM to contribute to reconciliation not only internally but within the different communities we operate in.

AECOM has built their RAP around three pillars: Relationships, Respect and Opportunities. AECOM has long been committed to playing our part towards reconciliation and improving outcomes amongst Aboriginal and Torres Strait Islander Peoples across life expectancy, health, education and employment. RAP demonstrates AECOM's commitment in action towards building good relationships, respecting the special contribution Aboriginal and Torres Strait Islander Peoples have made to Australia and working together as one to ensure all Australians are afforded the same opportunities.



Other EJ Projects

Client	Project Descriptions	Dates	EJ and Socioeconomic Components
San Francisco Public Utilities Commission	Sewer System Improvement Program - Program Management Contract 2011-2026	2011 - ongoing	AECOM is providing program management support in implementing the sewer system improvement program (SSIP). Additional specialized services will be provided on an as-needed basis, including addressing the impacts of gaining infrastructure and the system upgrades on the local and potential EJ communities.
Port of Oakland	On-Call Environmental Planning Services 2018-2023	2018 - ongoing	Environmental policy tasks include recommending board and organizational approaches to managing and mitigating environmental issues such as EJ, advising colleagues on environmental legislation and regulations, and participating in regional, state and national environmental policy efforts and organizations.
Virginia Department of Transportation	On-Call Engineering 2017-2022 - Curbside Asset Management	2017 - ongoing	AECOM tasks also include defining program existing conditions; conducting market research to highlight best practices as well as costs for assets and services; and identifying legislative, regulatory, community outreach, EJ needs, and data integration needs for adopting best practices.
City of Roseville, CA	General Plan Update, Environmental Impact Report & Climate Action Plan	2017 - ongoing	AECOM is preparing an environmental impact report, and climate action plan and comprehensive update to the city's general plan - the first update since 1994. The update addresses EJ, pursuant to CA SB 1000 and community resiliency and adaptation, pursuant to CA SB 379.



Client	Project Descriptions	Dates	EJ and Socioeconomic Components
Idaho Department of Transportation	Highway extension of Idaho 16 between Interstate 84 and Idaho 44	2019 - ongoing	AECOM's scope covers land use, land acquisition, social and EJ, economics and visual resources reports.
US Naval Facilities Engineering Command Atlantic HQ	Ship Homeporting Environmental Planning & Engineering Services 2016-2021	2016 - ongoing	AECOM in a joint venture on this contract to fulfill the Department of the Navy, Naval Facilities Engineering Command, NAVFAC Atlantic requirement for environmental planning and engineering services for the implementation of National Environmental Policy Act (NEPA) and Executive Order (EO) 12114, Environmental Effects Abroad of Major Federal Actions–Ship Homeporting and related operational issues. Our scope of services includes a variety of environmental analyses and reports including EJ.
East-West Gateway Council of Governments (St. Louis, MO)	Northside/Southside Light Rail Transit Study	2018 – 2019	AECOM is preparing a conceptual design study (CDS) to define and evaluate opportunities to design and implement street-running light rail transit (LRT) in a 17-mile corridor in St. Louis, MO. Particular emphasis will be placed on determining benefits and impacts to EJ communities, and the capacity of the LRT investment to catalyze station area development.
US Tennessee Valley Authority HQ	Clinch River Small Modular Reactor - Request for Additional Information Phase	2016 - 2018	AECOM provided socioeconomics, EJ, land use, and cultural resources services for the request for additional Information phase of the Clinch River SMR Project.
City of Pittsburgh, PA	On-call Infrastructure Design 2016-2019 - Equity Investment Analysis Tool	2016 - 2019	AECOM conducted a study for the city of Pittsburgh to assess patterns of prior city spending and customer service relative to the location of the neighborhoods most in need. The study started with a comprehensive assessment of socioeconomic conditions, based upon the concept of EJ analysis. This assessment identified various clusters of high need throughout the city, and it provided the basis for comparative analysis with indicators of city services.
Marathon Petroleum Corporation, LLC	Detroit Heavy Oil Upgrade Project (Houp)	2015	To evaluate the potential for health impacts to affected populations, our EJ report included an assessment of the health status of individuals living in close proximity to the project site. AECOM performed a cumulative effects analysis to identify potential sources of air pollution and emissions related to the expansion of the HOUP. EPA circulated our report within the agency as an outstanding example of a complete and comprehensive EJ study.
U.S. Army Corps of Engineers, St. Paul District	Fargo-Moorhead Flood Risk Management Study	2015	AECOM successfully completed EJ analysis assessing potential impacts from the proposed construction of flood risk management structures along the Red River bordering Minnesota and North Dakota. Our report received accolades from senior officials at USACE headquarters.



4. Partnering into the Future



AECOM recognizes that EJ is a dynamic process that does not end with an evaluation that snapshots a moment in time. AECOM can revisit the EJ evaluations as new legislation and improved data sets become available. AECOM can support the recommendations provided through the EJ Evaluation Reports, such as assisting with strategic planning and providing community outreach services.

Strategic Planning and Communications Services

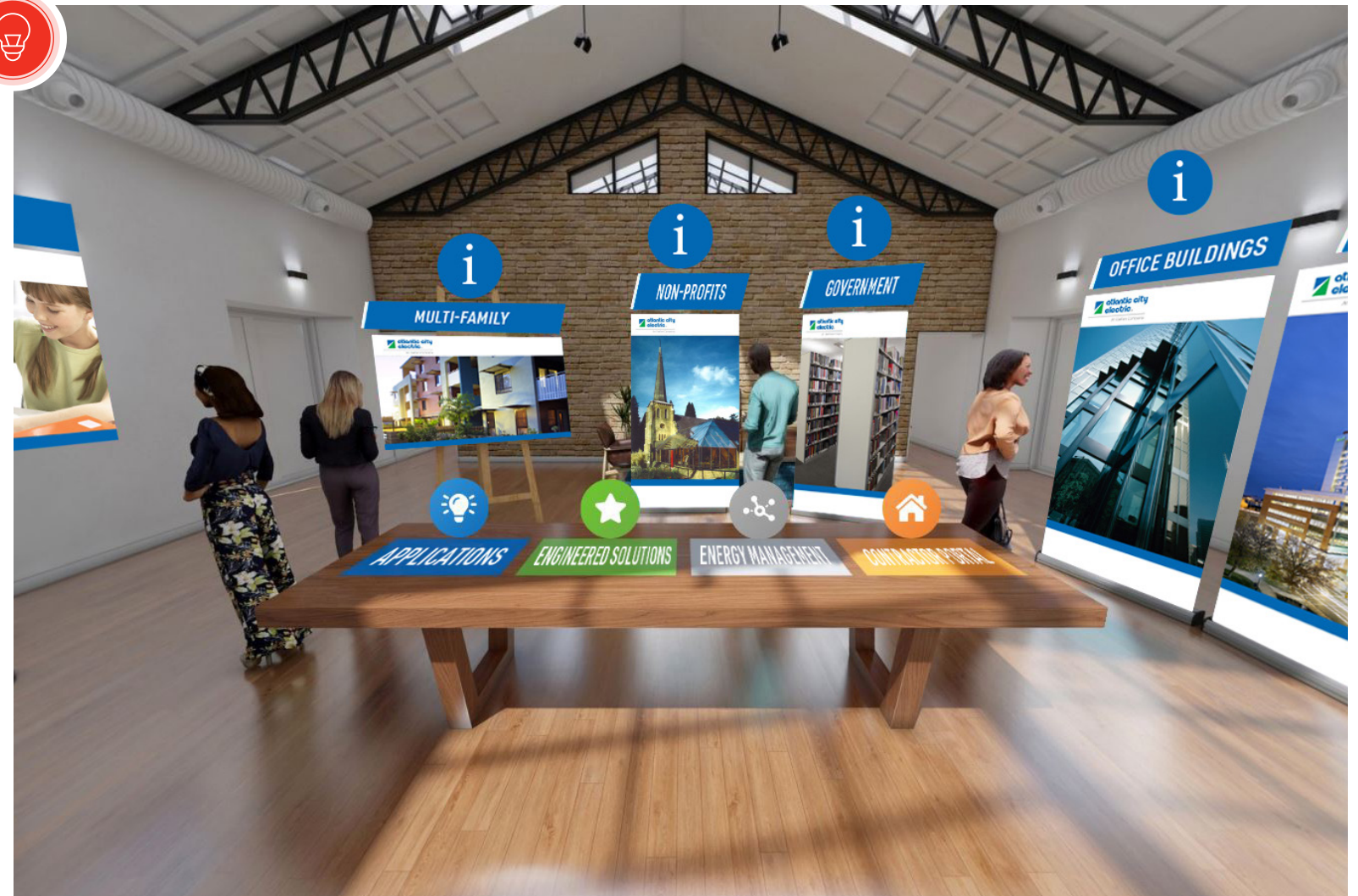
AECOM Strategic Communications Services believes EJ is an important consideration when strategizing and planning any outreach effort. Reaching all audiences within a project's area of influence is essential to a project's advancement. Working with local government officials, community leaders and grass roots organizations who are trusted by the community positions our team to engage effectively with and gather input and opinions from underserved populations. We meet these audiences where they are and use language and visuals relevant to their interests and appropriate for their needs.

Our approach is tailored to each project and community, leading to positive results. Developing strategic partnerships encourages collaboration and helps provide valuable solutions for clients. We recognize circumstances often change quickly, and we can rapidly create, adapt, and deploy campaigns for complex and critical projects. Our extensive expertise enables us to create strategic communications and education campaigns to reach diverse stakeholder groups.

Community Outreach and Partnerships Services

From large workshops to surveying at community markets and festivals, we pursue a multi-faceted approach to deriving rich, meaningful information throughout the public participation process.

Our multilingual community outreach practitioners take the charge of community engagement seriously. We work with our clients to understand their goals for community engagement and craft community outreach strategies accordingly.



From innovative outreach techniques to advancing thoughtful strategy, our public participation team is at the forefront of aligning engagement with project goals and context. We use techniques such as community interviews, youth participatory photography, mobile workshops, planning academies, and meetings co-sponsored by community partners to expand and deepen participation.

Our outreach specialists are trained by the International Association of Public Participation (IAP2), which focuses on the design of thoughtful public outreach programs to collect input that can meaningfully inform a project, plan, or policy. We also work as urban and environmental planners, drawing on our subject matter expertise to deepen engagement.

The AECOM team builds on a broad range of outreach expertise when crafting an engagement strategy. From running large workshop series on controversial subjects to engaging the community through on-street outreach at community events, such as farmers' markets and festivals, we create the best approach for collecting rich, meaningful information.

AECOM specializes in crafting community outreach and engagement plans to engage traditionally underrepresented groups. Our team has received training by the International Association of Public Participation (IAP2), whose core values state that those who will be affected by a decision have a right to be involved in the decision-making process.

Thus, at the core of our approach is an inclusive process. To be truly inclusive, communications, materials, and workshop formats need to be tailored to each stakeholder group.



What We Do

Strategy

Outreach plans

Capacity-building

Demographic analysis

Stakeholder assessments

Facilitation

Stakeholder interviews

Focus groups

Advisory committees

Communications

Websites

Social media

Press releases

Fact sheets

Branding

Meetings

Public workshops

Open houses

Charrettes

Forums

Compliance

Scoping

NEPA and CEQA outreach

Innovation

Videos

Surveys

Pop-ups

Walking tours

Participatory photography



About AECOM

AECOM is the world's trusted infrastructure consulting firm, delivering professional services throughout the project lifecycle – from planning, design and engineering to program and construction management. On projects spanning transportation, buildings, water, new energy and the environment, our public- and private-sector clients trust us to solve their most complex challenges. Our teams are driven by a common purpose to deliver a better world through our unrivaled technical expertise and innovation, a culture of equity, diversity and inclusion, and a commitment to environmental, social and governance priorities. AECOM is a Fortune 500 firm and its Professional Services business had revenue of \$13.3 billion in fiscal year 2021. See how we are delivering sustainable legacies for generations to come at aecom.com and @AECOM.